



VICTORIA UNIVERSITY OF
WELLINGTON
TE HERENGA WAKA
NEW ZEALAND



Study at Victoria University of Wellington New Zealand



#1 IN NEW ZEALAND FOR
RESEARCH INTENSITY*

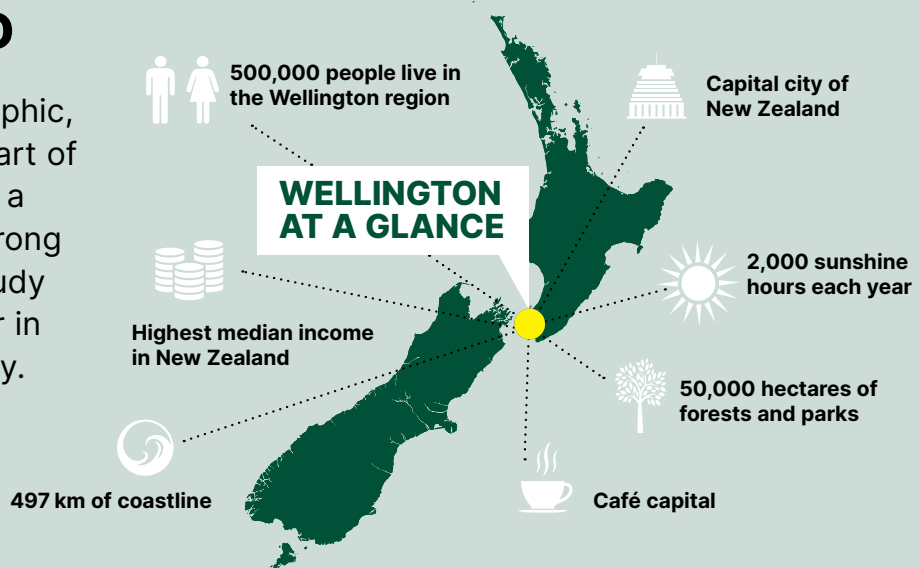
*Latest Performance-Based Research Fund Quality Evaluation

**CAPITAL THINKING.
GLOBALLY MINDED.**
MAI I TE IHO KI TE PAE

DISCOVER WELLINGTON

NEW ZEALAND

Wellington is the geographic, political, and cultural heart of New Zealand. You'll find a great quality of life, a strong global outlook, and a study experience to remember in our beautiful harbour city.



For more information, go to www.wgtn.ac.nz/international/why-wellington

WELLINGTON IS AN IDEAL PLACE TO STUDY

CREATIVE

Wellington is New Zealand's most creative city. It has topped the list for the past 20 years. You can find Wētā Workshop and the Museum of New Zealand Te Papa Tongarewa here.

(Infometrics Creativity Index 2023)

SAFE

Wellington is a safe and friendly place to live. It's ranked among the top 10 safest cities in the world.

(Safe Cities Index 2022)

DIVERSE

About 34 percent of people who live in Wellington were born outside of New Zealand, making it a diverse and welcoming city.

(Statistics New Zealand 2018)

LIVEABLE

Regularly ranked as one of the world's most liveable cities, Wellington has great public transport and a lively calendar of events.

(Global Liveability Index 2022)

HIGH TECH

Wellington is at the forefront of technology and innovation, with many tech companies calling it home. It's named as one of the world's '21 Places of the Future'.

(Cognizant Centre for the Future of Work 2021)

HAPPY

New Zealand is known for being one of the world's most sociable and supportive countries. It's no surprise that it ranks as one of the top 10 happiest countries in the world.

(World Happiness Report 2022)



VICTORIA UNIVERSITY OF WELLINGTON

Our students come from about

100

countries around the world

Top 1%

of the world's universities in 15 subject areas
(QS World University Rankings by Subject 2023)

ZERO CARBON BY 2030*

OUTSTANDING



Top 100

in the world in 7 subjects

(QS World University Rankings by Subject 2023)



#1 IN NEW ZEALAND FOR RESEARCH INTENSITY*

* Latest Performance-Based Research Fund Quality Evaluation

2,000 of our **22,000** students are international students

8 teaching faculties

43 research institutes

4 libraries

140+ clubs and societies



3 CENTRAL CITY CAMPUSES IN WELLINGTON



KELBURN



PIPITEA



TE ARO



“Victoria University of Wellington’s excellent research facilities, approachable academic staff, and overall culture of friendliness and support really made it stand out compared to other schools. Wellington is a city that feels quite integrated with the natural environment. I love my daily commute along the coast and seeing plant life everywhere. I’ve also really loved the café culture. There’s always a place where I can grab a coffee.”

Georgia Westfall

Student, Master of Science in Cognitive and Behavioural Neuroscience

Scholarships

Scholarships are available each year for international students at all study levels. To find out what scholarships you can apply for, go to

www.wgtn.ac.nz/international-scholarships

STUDY WHAT YOU LOVE

Victoria University of Wellington currently offers more than 170 different subjects.
To find out more, go to www.wgtn.ac.nz/international/programmes

ARCHITECTURAL STUDIES AND BUILDING SCIENCE

Architecture
Architecture History and Theory
Interior Architecture
Landscape Architecture
Project Management
Sustainable Engineering Systems
Urban and Regional Planning*

BUSINESS

Accounting
Actuarial Science
Business Administration*
Business Analysis*
Commercial Law
Data Science
Economics
Finance
Global Business*
Human Resource Management and Employment Relations
Information Systems
International Business
International Trade*
Management
Marketing
Public Management*
Public Policy
Taxation
Tourism Management

COMMUNICATION

Intercultural Communication
Linguistics
Literary and Creative Communication
Marketing Communication
Media Studies
Political Communication
Science Communication

DESIGN, FILM, AND MEDIA

Animation and Visual Effects
Communication Design
Design for Social Innovation
Design Technology*
Fashion Design Technology
Film
Game Design
Industrial Design
Interaction Design
Media Design
Media Studies
User Experience Design*

EDUCATION AND TEACHING

Education
Educational Psychology
Teacher Education (Early Childhood)
Teacher Education (Primary and Secondary)**

ENGINEERING AND DIGITAL TECHNOLOGIES

Artificial Intelligence
Computer Graphics and Games
Computer Science
Cybersecurity Engineering
Electrical and Electronic Engineering
Electronic and Computer Systems
Renewable Energy Systems
Software Engineering

ENGLISH LITERATURE AND CREATIVE WRITING

Creative Writing*
English (Literature)

ENVIRONMENTAL SCIENCES

Climate Change Science and Policy*
Conservation Biology*
Ecological Restoration*
Ecology and Biodiversity
Environmental Science
Environmental Studies
Marine Biology
Marine Conservation*

HEALTH

Health Informatics
Health Leadership and Management*
Health Policy, Planning, and Service Delivery*
Health Promotion
Health Psychology
Midwifery
Nursing Practice*
Nursing Science*
Population Health, Policy, and Service Delivery
Professional Practice*
Workplace Health and Safety*

HISTORY AND PHILOSOPHY

Art History
Classical Studies
Greek
History
Latin
Museum and Heritage Studies*
Philosophy

LANGUAGES AND LINGUISTICS

Applied Linguistics*
Asian Studies
Chinese
French
German
Intercultural Communication and Applied Translation*
Italian
Japanese
Linguistics
Literary Translation Studies*
Modern Language Studies
New Zealand Sign Language (NZSL) Studies
Pacific Studies
Samoan Studies / Matāupu tau Sāmoa
Spanish
Te Reo Māori
Teaching English to Speakers of Other Languages (TESOL)
Text Technologies
Writing (Academic and Professional)

LAW

International Trade*
Law

MATHEMATICS AND STATISTICS

Actuarial Science
Applied Statistics*
Data Science
Mathematics
Statistics
Stochastic Processes in Finance and Insurance*

MUSIC AND THEATRE

Classical Performance
Ethnomusicology*
Instrumental/Vocal Composition
Jazz Performance
Music
Musicology*
Music/Sound*
Music Studies
Music Therapy*
Performance*
Popular Music Studies
Sonic Arts and Music Technology
Theatre

POLITICS AND PUBLIC POLICY

International Relations
Migration Studies*
Political Communication
Political Science
Public Management*
Public Policy
Strategic Studies*

PSYCHOLOGY

Cognitive and Behavioural Neuroscience*
Cross-cultural Psychology*
Educational Psychology
Forensic Psychology*
Health Psychology
Psychology

SCIENCE

Applied Physics
Biology
Biomedical Science
Biotechnology
Cell and Molecular Bioscience
Chemistry
Clinical Immunology*
Data Science
Drug Discovery and Development*
Geography
Geology
Geophysics (Meteorology, and Solid Earth)
Human Genetics
Molecular Microbiology*
Molecular Pathology
Molecular Pharmacology and Medicinal Chemistry
Physical Geography
Physics
Renewable Energy*
Science Communication
Science in Society*
Space Science

SOCIAL SCIENCES

Criminology
Cultural Anthropology
Development Studies
Gender and Sexuality Studies
Global Studies
Indigenous Studies*
Māori Resource Management
Māori Studies
Religious Studies
Social Policy
Sociology

*Available at postgraduate level only

**Available at graduate level only



AN INSPIRING ENVIRONMENT

Our capital-city location allows us to play a significant part in cultivating intellectual capital and facilitating innovation, entrepreneurship, and sustainable economic growth.

Our distinctive approach builds on our location in Aotearoa New Zealand's political and cultural capital, our proximity to internationally respected centres of creativity, and the significant value we gain from bringing Indigenous knowledge to bear on both basic and applied research. Our partnerships help build the capability of our researchers, delivering knowledge and understanding that improve social, cultural, and economic outcomes in the Asia-Pacific.



OUR RESEARCH IS WORLD LEADING

#1 in research intensity

Victoria University of Wellington pursues ambitious research designed to challenge the status quo, push the boundaries of new knowledge, and enhance the world around us.

Since 2012, the University has been Aotearoa New Zealand's top-ranked university for intensity of high-quality research*. We have a higher proportion of our academics conducting high-quality research than any other university in New Zealand. We leverage our research strengths, and the distinctive advantages and opportunities that Wellington provides, to enrich the learning of our students and deliver transformative outcomes for our city, our nation, and the world.

At Victoria University of Wellington, we attract global scholars to develop the diversity and scale required to deliver high-impact research across the breadth of scholarship at the University.

www.wgtn.ac.nz/research

*Based on the latest Performance-Based Research Fund Quality Evaluation.

RESHAPING THE FUTURE

Carbon neutral by 2030

We are championing a sustainable future by fostering the leaders of tomorrow, delivering world-class research, and building a sustainable campus.

Staff and students at Victoria University of Wellington, along with our partners, can make a real contribution to the global conversation on sustainability and the challenges we face.

www.wgtn.ac.nz/sustainability

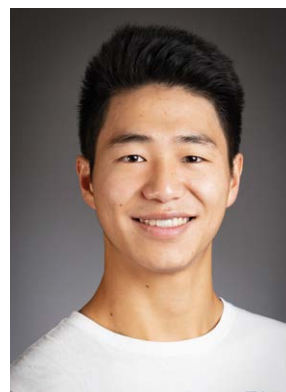
GLOBALLY MINDED

Where diverse cultures connect

We build networks around the world to ensure intercultural and global perspectives are integrated into all aspects of university life, so that staff and students are well equipped to thrive in an international environment.

Our intellectual influence in the Asia-Pacific and beyond is built on mutually beneficial partnerships and world-leading thinking on global challenges. Our attractiveness to international research partners, students, and academics is based on research-led teaching, our leading position in New Zealand in research quality, and our location in one of the world's leading global-civic creative capitals.

www.wgtn.ac.nz/global



David Wang

Student, Bachelor of Science in Biology

“My programme paved the way for me to delve deeper into all kinds of research in biology. There are libraries around every corner of the city with free study spaces; therefore, it never worried me to find a place to study. I enjoy the peacefulness of residing in Wellington.”

JOIN US

COSTS AND FEES

Use our cost calculator to work out your likely study and living costs.

www.wgtn.ac.nz/cost-calculator

ENGLISH STUDY

Our English for Academic Purposes (EAP) programme can help you improve your English and prepare you for your academic studies.

www.wgtn.ac.nz/eap

FOUNDATION STUDIES

In partnership with UP Education, our Foundation Studies programme will develop your knowledge and skills to equip you for undergraduate university study.

<https://wgtn.up.education>

Our global Foundation partner Northern Consortium UK (NCUK) offers a pathway that will bridge your study from your home country to Victoria University of Wellington.

www.wgtn.ac.nz/ncuk

ENTRY REQUIREMENTS

Academic entry requirements vary from country to country. For more information, go to our website.

www.wgtn.ac.nz/international/entry-requirements

MINIMUM ENGLISH-LANGUAGE REQUIREMENTS

ONE OF:	IELTS Academic	TOEFL iBT	Pearson Test of English (PTE)	Cambridge English Qualifications (C1 Advanced/ C2 Proficiency)	New Zealand Certificates in English Language (NZCEL)	Victoria University of Wellington English for Academic Purposes (EAP)
Undergraduate students	Overall band of 6.0 with no sub-score below 5.5	A score of 80 on the internet-based test	A score of 50 with a 'Communicative' score of not less than 42	A score of 169 or higher, with each skill score no less than 162	NZCEL Level 4 (Academic)	A minimum of three ratings of 4 and one rating of 3
Postgraduate students	Overall band of 6.5 with no sub-score below 6.0	A score of 90 on the internet-based test, with at least 20 in writing	A score of 58 with a 'Communicative' score of not less than 50	A score of 176 or higher, with each skill score no less than 169	NZCEL Level 5 (Academic)	A minimum of two ratings of 5 and two ratings of 4

English-language requirements may be higher for some programmes. You may be exempt from these requirements if your previous studies were undertaken in a native English-speaking country for at least one year. Some alternative online English tests may also be accepted. Go to www.wgtn.ac.nz/international-apply for more details.

THE PASTORAL CARE CODE

The Government's Pastoral Care Code sets out the University's role and responsibilities in ensuring the wellbeing and safety of all our students. This includes fostering learning environments that are safe and designed to support positive learning experiences of diverse student groups. During your time here, you have access to a range of services and support to promote your overall wellbeing, development, and educational achievement.

Read more about the code and our obligations: www.nzqa.govt.nz/the-code

© Victoria University of Wellington, 2023

The University reserves the right to make any changes to the information provided without notice. Accordingly, the University accepts no responsibility for any loss suffered by any person due to reliance (either whole or in part) on the information contained in this document.

CONTACT US

Wellington University International

+64 4 463 5350

international@vuw.ac.nz

www.wgtn.ac.nz/international

FOLLOW US ON SOCIAL MEDIA

www.instagram.com/Wellington_Uni

www.wgtn.ac.nz/linkedin

www.tiktok.com/@wellingtonuni

WeChat: Victoria University of Wellington

WATCH OUR VIDEOS

www.wgtn.ac.nz/youtube

