



Photo credit: Tourism NT/Peter Eve

Charles Darwin University

Study Abroad and Exchange Guide 2020



Welcome to Charles Darwin University

We are a new world University. We think differently. We innovate and embrace change. We challenge conventions and look for better ways.

Charles Darwin University is globally renowned for its innovative and new-age teaching and research impact. Ranked globally as a Top 10 Millennial University*, our purpose is to improve the lives and opportunities of people and communities in Australia and Asia-Pacific.

Our globally recognised teaching and research strengths lie in environmental studies, Indigenous and tropical health, engineering, humanitarian and disaster management, information technology, public policy and Indigenous knowledges.

Over 30 years, Charles Darwin University has built a reputation as one of the most innovative teaching, learning and research-intensive universities in Australia.

*Times Higher Education (THE) Millennial Ranking of Young Universities 2018

CDU's Study Abroad and Exchange programs will prepare you for a global career

- > CDU is one of the Top 100 universities in the world for helping to reduce inequity (Times Higher Education World University Impact Rankings 2019.)
- > CDU is one of the Top 45 universities in the world for helping to create sustainable cities and communities (Times Higher Education World University Impact Rankings 2019.)
- > Study with a university that is ranked in the top 100 universities in the Asia-Pacific region in 2019 (Times Higher Education Asia-Pacific University Ranking 2019.).

Why study in Darwin?

Located in the tropical Northern Territory of Australia, Darwin is a modern, vibrant and multicultural city. It is home to Australia's most ancient and iconic landscapes. Darwin has a youthful energy, with many exciting festivals, cultural and social activities, and food extravaganzas. If you are after some adventure, Darwin is the ideal place for weekend getaways to secluded waterfalls, tropical oasis beaches, and the gateway to the red sandy deserts of the outback.

Darwin at a glance:

- > Diverse and friendly international community made up of people from more than 60 nationalities
- > One of Australia's smallest capital cities, making it easy to live and study
- > At the doorstep to Asia Pacific



CDU's Study Abroad and Exchange programs

CDU welcomes Study Abroad and Exchange students from our partner and non-partner universities around the world. We provide you with relevant units (subjects) and activities to make your learning abroad experience unforgettable.

Study Abroad program

Students who are not studying at one of CDU's partner universities can choose to study with us for one or two semesters as a fee-paying student, which means fees are paid directly to CDU and not to your home institution.

| STUDY ABROAD FEES IN 2020 | |
|---------------------------|----------|
| One Semester (ZSA1S1)** | \$8,500 |
| One Semester SSAF* | \$150 |
| Two Semesters (ZSA2S1)** | \$17,000 |
| Two Semester SSAF* | \$300 |

*Student service and amenities fee **CDU course code

CDU Exchange program

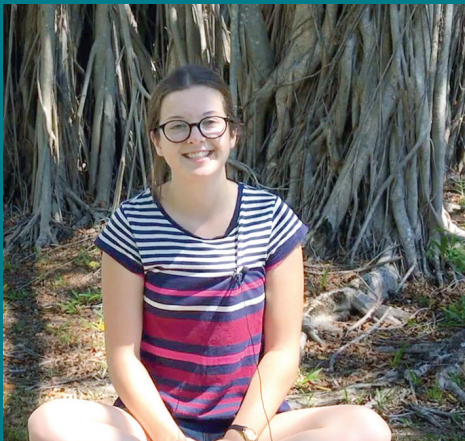
CDU has opportunities for you to participate in extraordinary exchange experiences. We have global ties to more than 40 partner universities across Asia, Europe and North America. Exchange students are nominated by a CDU partner university and are not required to pay tuition fees to CDU. Any tuition fees are paid to your home university.

What can I study?

Experience life in tropical northern Australia while studying at a new generation university, with global research and teaching impact. CDU Study Abroad and Exchange programs allow you to continue your study for one or two semesters at a time. Our programs are suitable for students who have completed at least one year of undergraduate studies. At CDU a typical study load per semester is 30-40 credit points (CP). One unit (subject) is usually worth 10CP. Study Abroad and Exchange students can choose from a list of available units for Semester 1 or 2 in the following areas:

- > Accounting and Finance
 - > Biomedical Science
 - > Business
 - > Communications
 - > Creative Arts
 - > Design
 - > Economics
 - > Education
 - > Engineering
 - > Environmental Science
 - > Exercise and Sports Science
 - > Health
 - > History
 - > HR Management
 - > Humanitarian, Emergency and Disaster Management
 - > Indigenous Studies
 - > Information Technology
 - > Language and Linguistics
 - > Law
 - > Literature
 - > Marketing
 - > Midwifery
 - > Nursing
 - > Philosophy
 - > Psychology
 - > Public Health
 - > Public Policy
 - > Social Science
- 10 CP equals 3-4 credits in the US system
- 10 CP equals 7.5 ETCS in the European system

Please access the unit catalogue here: <https://bit.ly/36zfceV> for all units available. Please note that all units are subject to availability, capacity and eligibility.



Karolina's experience at CDU

"...I was very excited to study as far away from Sweden as possible in an environment very different to my home town... climate, nature and wildlife is unique in Darwin and the NT. International House Darwin and CDU organised many activities for international students to socialise, for example I went on camping trips to iconic national parks such as Kakadu National Park and Litchfield National Park and visited the Territory Wildlife Park and Bare Sand Island, where I saw sea turtles hatch. I made so many friends from different countries and different backgrounds, it was amazing. Enjoy Darwin and experience as many sunsets as you can... I am going to miss the laid-back atmosphere of the Northern Territory."

Karolina Czarnecka, Karlstad University, Sweden – Exchange student Semester 2, 2018

Karolina studied 4 elective units at Charles Darwin University: Music (Piano), Painting and Textile Arts, Philosophy (Decision-Making), Cultural Intelligence and Capabilities

CDU program options

Design your own program

You can design your own program by selecting units from CDU's range of study areas, as long as you have the necessary prerequisites. Please note that all units are subject to availability, capacity and eligibility. Please find all available units in the unit catalogue: <https://bit.ly/36zfceV>.

Option 2: Choose a package

Select from our unique and exciting packages. You can complete one or two Semesters by selecting 3-4 units of study per Semester from one of our packages. We recommend that you have a look at some back-up units in case of timetabling clashes and availability. Please find the unit catalogue with available units here: <https://bit.ly/36zfceV>. Please note that all units are subject to availability, capacity and eligibility.

CDU packages

Indigenous Knowledges and Culture

| | | | | | |
|-------------------|-------------------------------|--|--|--|---|
| Semester 1 | IAS131 - Colonising Australia | IAS245 - Indigenous Contemporary Perspectives | IAS321 - Indigenous Sovereignty and the Challenges of Reconciliation | IAS351 - Indigenous Networking and Collaboration | IAS355 - Indigenous Knowledges and Wellbeing |
| Semester 2 | IAS124 - Contested Knowledges | IAS142 - Ethics and Protocols in Indigenous Contexts | IAS252 - Language Maintenance and Identity | IAS352 - Practices and Skills in Indigenous Community Work | IAS354 - Impact Assessment and Management of Cultural Sites |

Business in a Global Context

| | | | | |
|-------------------|---|----------------------------------|--|-----------------------------|
| Semester 1 | MAN206 - Managing Change | MKT303 - International Marketing | BUS303 - E-Commerce in the Global Environment | MAN204 - Project Management |
| Semester 2 | MAN310 - New Venture Planning and Development | MAN306 - Business Strategy | IAS326 - Social Cognition and Power in the Digital Age | BUS201 - Business Ethics |

Human Rights and International Law

| | | | | |
|-------------------|--|------------------------------------|--|--------------------------------------|
| Semester 1 | LWB206 - Human Rights | LWZ112 - Comparative Legal Systems | IAS133 - Introduction to International Relations | IAS335 - War, Revolutions and Terror |
| Semester 2 | LWB201 - Indigenous Peoples and the Legal System | LWA318 - Public International Law | IAS342 - Neo-colonialism, Advocacy and the Critique of Development | LWZ212 - Transnational Law |

Health Studies in an Australian Context

| | | | | |
|-------------------|--|--|--|--|
| Semester 1 | HSC203 - Indigenous Health Perspective | HSC230 - Cultural Safety in Healthcare | HSC312 - Global and Environmental Health | SWK301 - Working with Developing Communities |
| Semester 2 | HSC312 - Rural and Remote Health | HSC210 - Health Sociology | HSC202 - Mental Health and Wellbeing | IAS246 - Advocacy and Social Action |

Exercise and Sports Science

| | | | | |
|-------------------|----------------------------|--|--|---|
| Semester 1 | SPE205 - Biomechanics 1 | SPE206 - Exercise and Sport Psychology 1 | SPE210 - Motor Control and Development | HSC203 - Indigenous Health Perspectives |
|-------------------|----------------------------|--|--|---|

Governance and Leadership in Global Development

| | | | | | |
|-------------------|--------------------------------------|---|-----------------------------|--|-----------------------------|
| Semester 1 | IAS201 - Cultural Capabilities | IAS241 - Indigenous Policy Principles and Practice | IAS333 - Political Ideas | IAS341 - Indigenous Knowledges and Epistemologies | IAS343 - Race and Policy |
|-------------------|--------------------------------------|---|-----------------------------|--|-----------------------------|

Environmental Management in Northern Australia

| | | | | |
|-------------------|--|--|--|--|
| Semester 1 | IAS225 - Cultural Resource and Site Management | IAS353 - Indigenous Cultures and the Environment | ENV202 - Introductory Remote Sensing | ENV300 - Wildlife Management |
| Semester 2 | ENV103 - Environmental Issues | IAS144 - Indigenous Lands and Resources | ENV303 - Ecological Restoration and Conservation | ENV301 - Tropical Invaders and Biosecurity |

Communication and Digital Media

| | | | | | |
|-------------------|---|--|---|--|---|
| Semester 1 | IAS113 - Introducing Communication Studies | IAS173 - Digital Media and Online Content Design | AS2113 - Media and Professional Writing | IAS215 - Screen Media and Production 1 | IAS315 - Digital Sound Recording and Design |
| Semester 2 | IAS114 - Introduction to Screen Media | IAS212 - Media and Culture in Global Communications | IAS216 - Screen Media and Production 2 | IAS224 - Philosophy of Arts and Cultures | IAS274 - Digital Image Capture and Photographic Media |

Software Engineering and IT

| | | | | |
|-------------------|--|---|---|-----------------------------------|
| Semester 1 | HIT381 - Human Computer Interaction Design | HIT326 - Database-Driven Web Applications | HIT235 - Digital Systems and Computer Architecture | IAS201 - Cultural Capabilities |
| Semester 2 | HIT274 - Network Engineering Applications | HIT220 - Algorithms and Complexity | PMO201 - Project Management | HIT333 - Cyber Security |



Photo credit: Tourism NT/James Maddock

How to apply

Study Abroad program

CDU's Study Abroad program invites students from all universities around the world to study some of Australia's most unique study abroad programs for a semester or year. To study with CDU as a Study Abroad student, all you have to do is meet CDU's academic entry requirements for the units you want to study, meet English Language requirements, and be 18 years of age or over at the time of application.

For more information on the application process and entry requirements visit: cdu.edu.au/international/study-abroadand-exchange-inbound/study-abroad or contact us at international@cdu.edu.au with any questions you might have.

Exchange program

CDU's Exchange program allows you to continue your studies for one or two semesters at one of Australia's most multicultural universities. As an exchange student, you don't pay CDU tuition fees, you pay tuition fees to your home university. To apply for the CDU Exchange program, you need to be nominated by your home university.

Check if your home university is a CDU partner to find out if you can come to CDU as an exchange student.

For further information please contact your home university to begin the nomination process.

Key dates

| Program | Nomination to CDU (for exchange students) | Application deadline (for exchange and study abroad students) |
|----------------------------------|--|---|
| Semester 2, 2020 July - November | 30 April 2020 | 31 May 2020 |
| Semester 1, 2021 February - June | 31 October 2020 | 30 November 2020 |



Live on or off campus

At Charles Darwin University you have a range of accommodation choices to suit your budget and lifestyle. You may like to live on-campus within the grounds of our Casuarina campus, so you can really take advantage of all the facilities and activities on offer. It's just a short walk to the library and all the other amenities. Off-campus accommodation options include purpose-built student accommodation at UniLodge, private rental accommodation and homestay.

CDU accommodation service

The CDU off-campus accommodation service is designed to assist new and continuing students to find appropriate accommodation while studying at CDU. This free and confidential service provides information and advice on housing options, tenancy advice and support and assistance with accommodation problems.
cdu.edu.au/equity

CDU International House Darwin (IHD)

Located on the Casuarina campus, International House Darwin (IHD) is set within tropical gardens and Australian bush. All CDU students are welcome. Long and short-term accommodation is available. Around 40 nationalities make up our community and everyone at IHD is encouraged to connect. Embracing opportunities ensures a broad and rich educational, social and cross-cultural experience. On-campus accommodation is also available at Alice Springs and Katherine campuses: cdu.edu.au/ihd



UniLodge off-campus accommodation

UniLodge Darwin student accommodation offers students a modern and convenient living environment only 800 metres from Charles Darwin University, Casuarina campus. UniLodge Darwin is a purpose built student accommodation building and residents can choose from a range of accommodation options at different price levels.
unilodge.com.au/lodge/darwin/

Homestay

Homestay is an excellent way to make new local friends, learn quickly and safely about local customs and ways, and generally make your transition from your home country to Australia smoother and more comfortable. For more information or to apply please visit:
cdu.edu.au/equity-services/accommodation



How much does it cost to live in Darwin?

| Accommodation table: estimated weekly expenses for a single student | | | | |
|---|----------------------------|------------------|---|--|
| TYPE | INTERNATIONAL HOUSE DARWIN | UNILODGE DARWIN | SHARED ACCOMMODATION | RENTAL ACCOMMODATION |
| Rent | \$140-\$207 | \$179-\$310 | \$150-\$350 | \$300-\$1000 |
| Utilities (Gas, Electricity & water) | Included in rent | Included in rent | \$15-\$30 | \$40-\$60 |
| Internet | Included in rent | Included in rent | \$10-\$20 | \$20-\$40 |
| Establishment cost (Bond) | - | - | \$600-\$1400 (4 weeks advanced rent) | \$1200-\$4000 (4 weeks advanced rent) |
| Food and Groceries | \$80-\$200 | \$80-\$200 | \$80-\$200 | \$80-\$200 |
| Public Transport | \$7 | \$7 | \$7 | \$7 |
| Entertainment | \$40-\$60 | \$40-\$60 | \$40-\$60 | \$40-\$60 |
| Total | \$267-\$474 | \$306-\$577 | \$302-\$667 | \$487-\$1367 |

CDU student support

As a Charles Darwin University student, you will be supported when you need it most, so you can focus on your studies and achieve your goals. Whether that support is with your academic studies or with your health and wellbeing, CDU offers you free and confidential support.

Your first point of contact is the CDU Global team, who will support you throughout the application process, enrolment, pre-departure, arrival and settling in your new home.



CDU Student Ambassadors

Our Student Ambassadors have a passion for their studies at Charles Darwin University, and want to share their experiences with you. They volunteer their time, to share their knowledge of CDU with people who want to gain a better understanding of university life and Australia's Northern Territory. CDU Ambassadors will look after you during your time with us, especially during the first couple of weeks while you are settling in.

Language and learning support

The Academic Language and Learning Success Program (ALLSP) assist all students with academic skills development. The ALLSP team work with all students and their course lecturers to help students understand the requirements of assignments and to further individual study skills.

Other support services

Moving to a new country is an exciting experience but it can also have its challenges, including the pressure of study, change of culture, or simply missing your family and home. If you find yourself being affected, there are people you can turn to for help, including:

- > CDU Support Services: If you're currently enrolled at CDU, you can book a confidential and free session to discuss anything that may be affecting your wellbeing.
- > Beyond Blue: a free and confidential phone help service available anywhere in Australia



Student clubs and societies at CDU


Social networking is a part of life for many students. Connecting with others can provide friendship and support, including a way of managing the stress of completing assignments and exams. At CDU there are many clubs and societies that you can join to make new friends.

Visit cdusa.cdu.edu.au/clubs-and-societies for more information.





Charles Darwin University, Ellengowan Drive, Northern Territory, Australia 0909
 T: +61 8 8946 7215 | E: international@cdu.edu.au | W: www.cdu.edu.au/international

 facebook.com/CharlesDarwinUniversity
facebook.com/CDU.International

Information printed in this publication is correct at the time of printing (November 2019). Images courtesy of CDU Image gallery, Sam Earp and Tourism NT.

Charles Darwin University acknowledges the traditional custodians across the lands on which we live and work, and we pay our respects to Elders both past and present.

CRICOS Provider No. 00300K (NT/VIC) | 03286A (NSW) | RTO Provider No. 0373. 63796 UniPrint 11/19

